

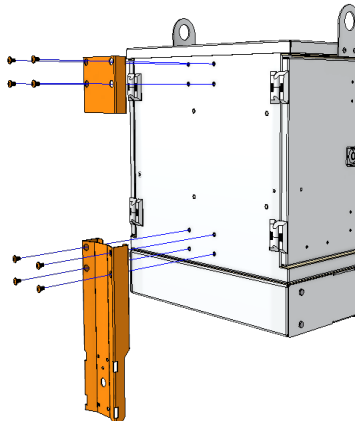
## INSTALLATION NOTES



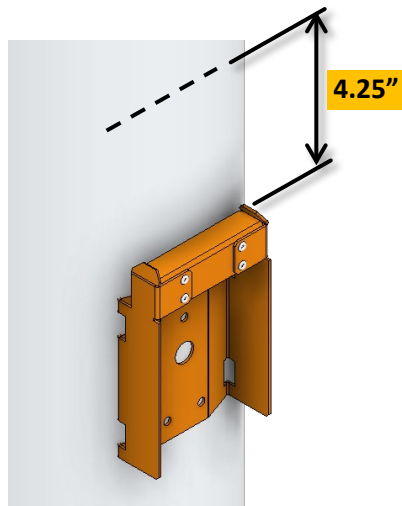
### MODEL: FDH5 MODULAR SPLITTER CABINET

#### 1. POLE / WALL MOUNT

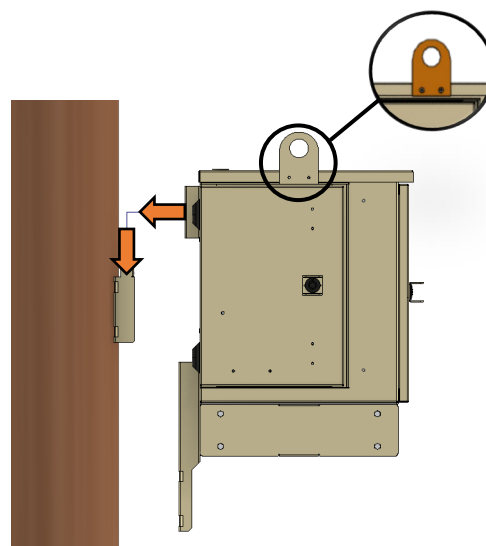
1.1 Attach top and bottom mounting brackets to the cabinet as indicated.



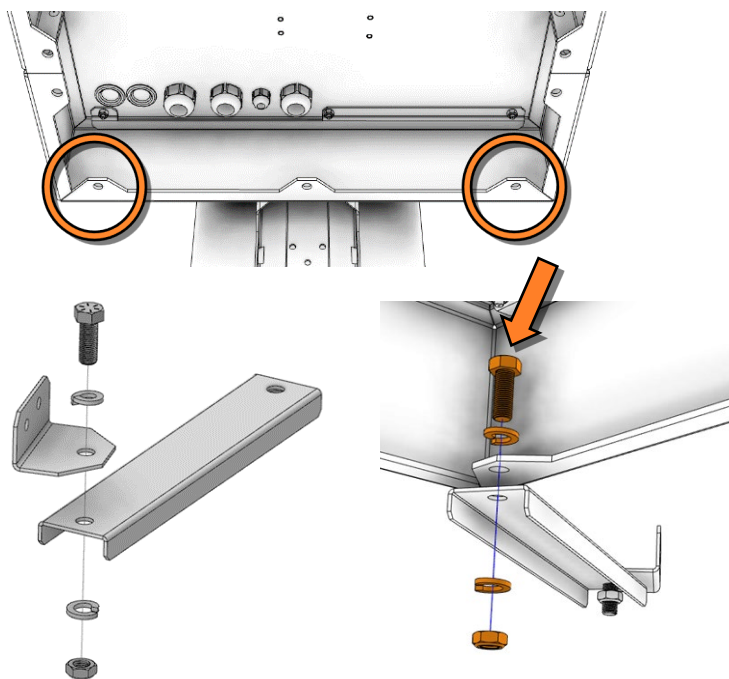
1.2 Mark on the pole the desired location of the cabinet top. Install the pole bracket 4.25 inches below that mark, with screws or metal straps.



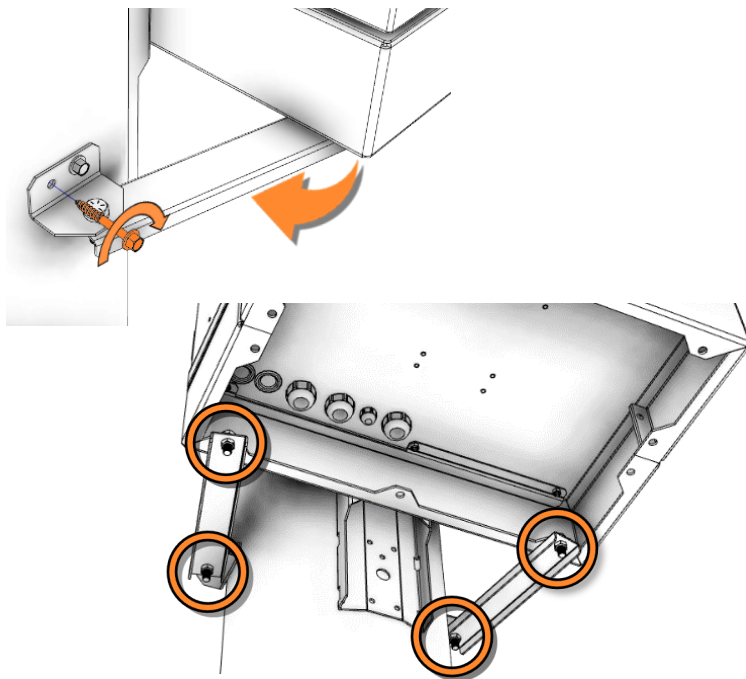
1.3 Hoist the cabinet from the two lifting ears and slide it over the pole bracket. Secure the bottom bracket to pole with steel straps or screws.



1.4. Attach Braces to holes on skirt with provided 3/8" x 1" hex bolts and the split washers.

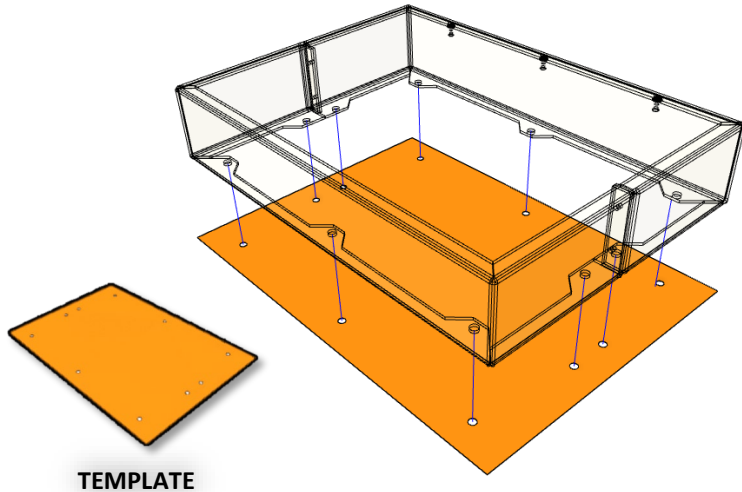


1.5 Attach L bracket of brace to the pole with provided 1/4" x 2" lag screws. Tighten the brace screws to secure position.

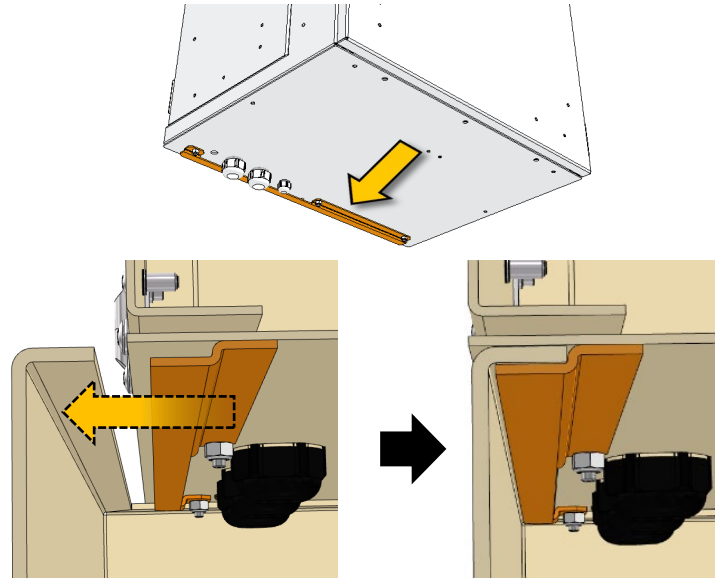


## 2. PAD MOUNT

2.1 Use provided template to drill concrete pad and install anchors in the right locations. Attach cabinet base to previously installed anchors. Holes on mounting base can accommodate 3/8" or 5/16" mounting bolts.

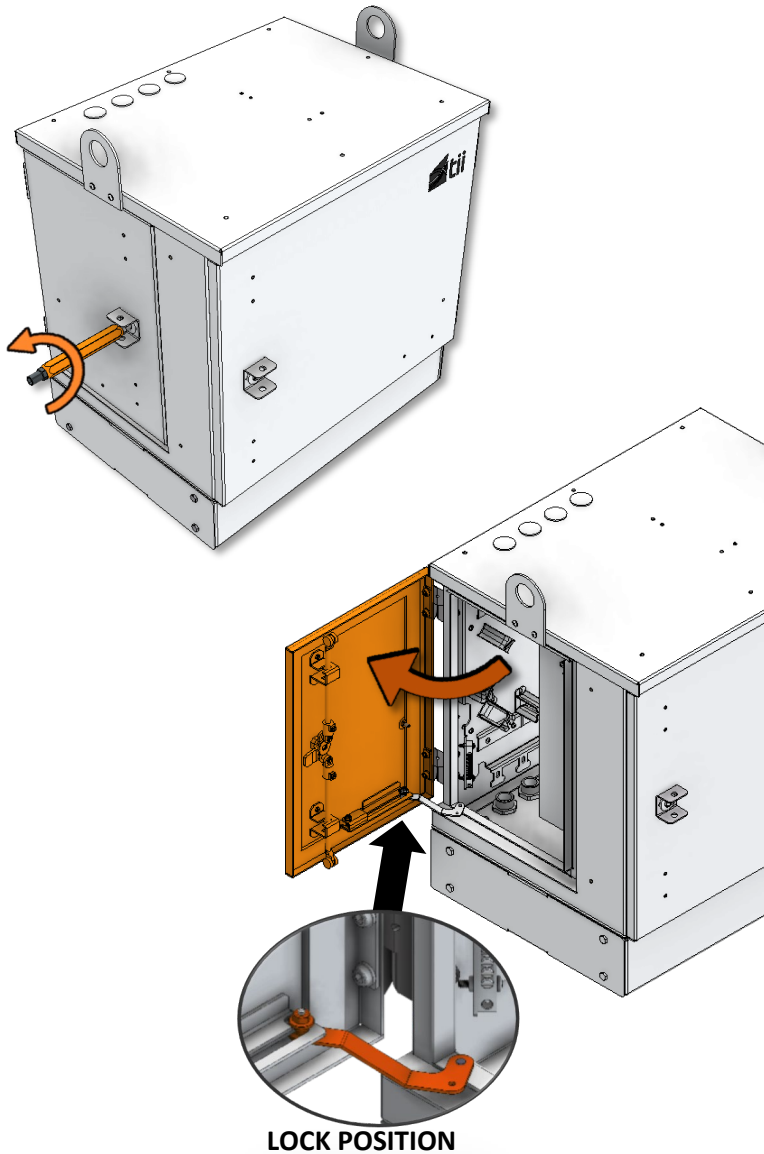


2.2 Slide cabinet over mounting base so the bracket on the back of the cabinet engages the lip of the base.

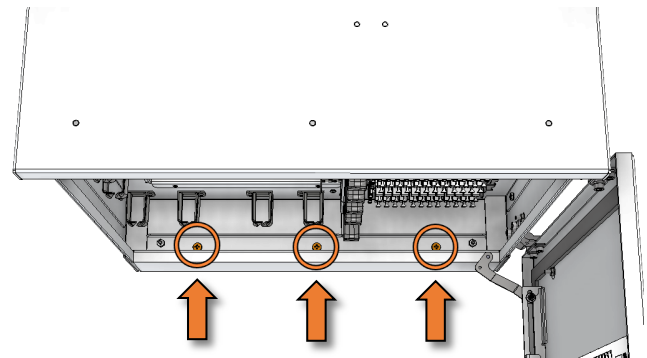


## 3. GROUNDING THE CABINET

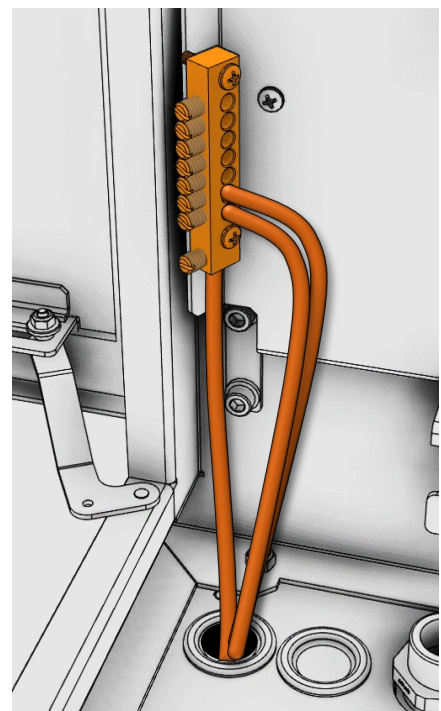
3.1 Open left side door with 216 tool.



2.3 Secure with 3 screws from inside the cabinet as indicated above.

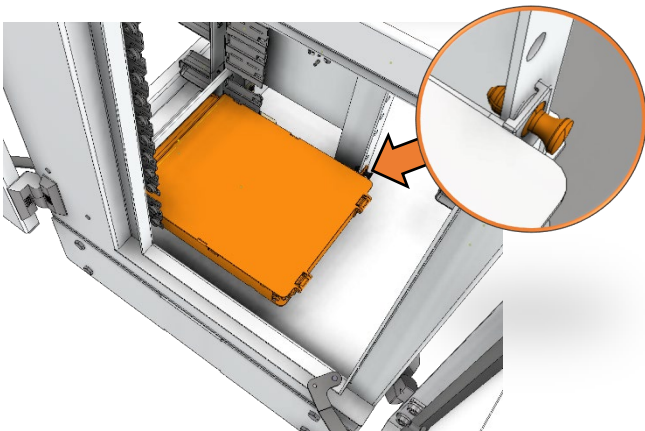


3.2 Bring grounding cable thru provided hole on bottom of cabinet, and securely fix to grounding bar.

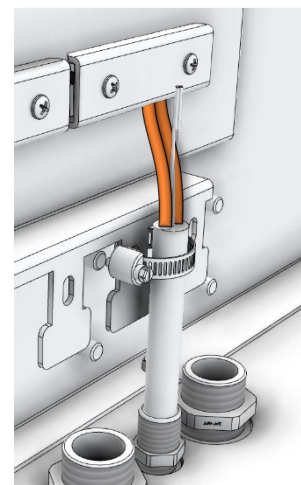
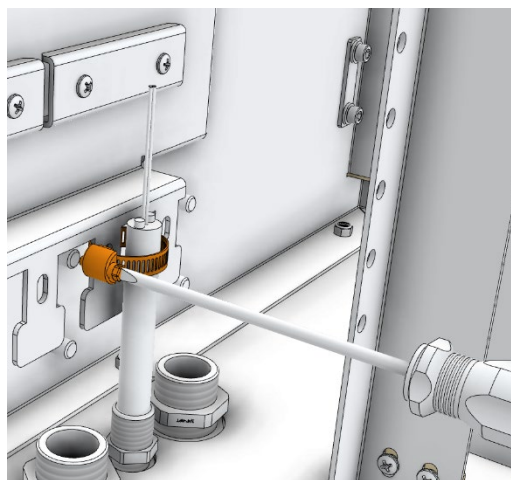


## 4. ADDING/SPLICING TO/ SERVICING A CASSETTE

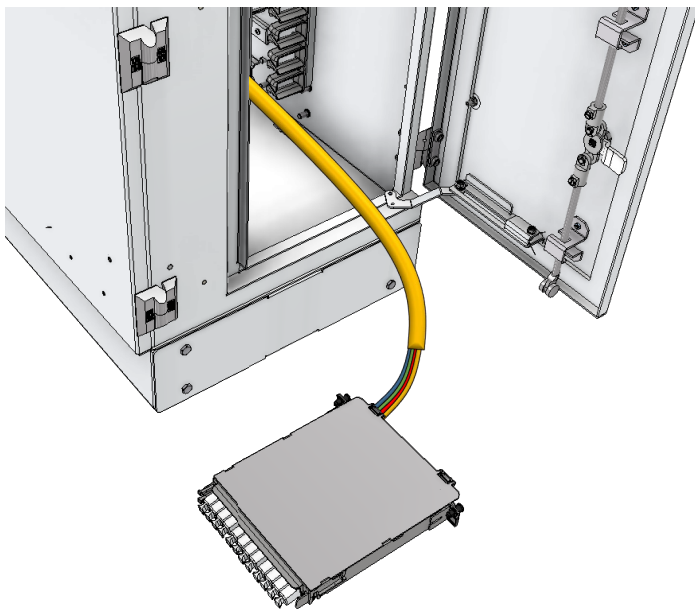
4.1 Remove the feeder cassette by releasing the mounting pin (located on the far side behind the cassette as shown), slide the cassette rearward, and remove the cassette through the side door opening.



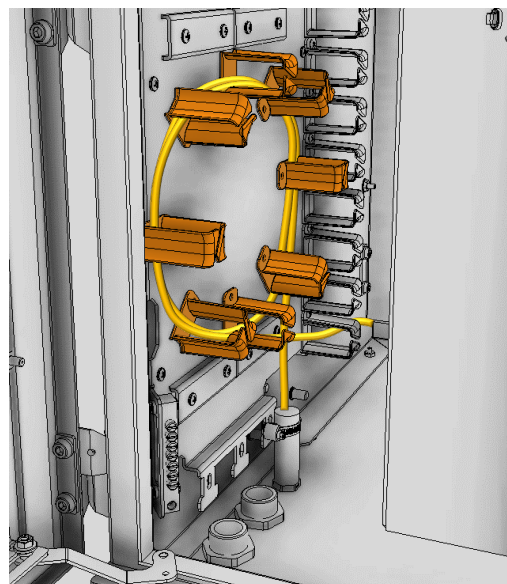
4.2 Insert feeder cable thru small cable port, tighten external nut, secure jacket with hose clamp and fix strength member as indicated.



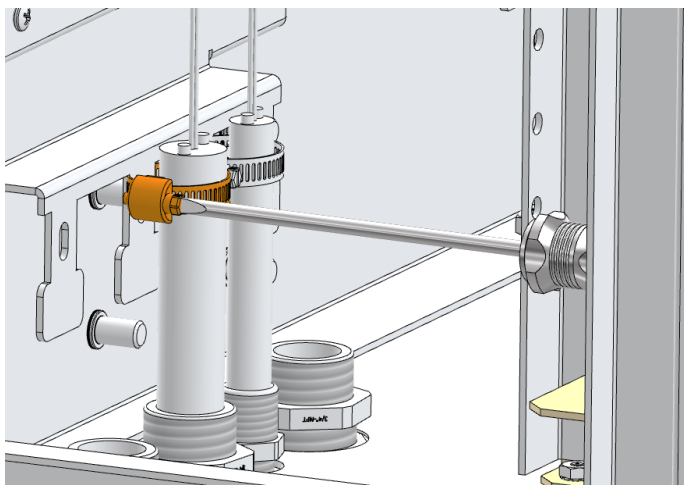
4.3 Make all required fusion splices inside feeder cassette.



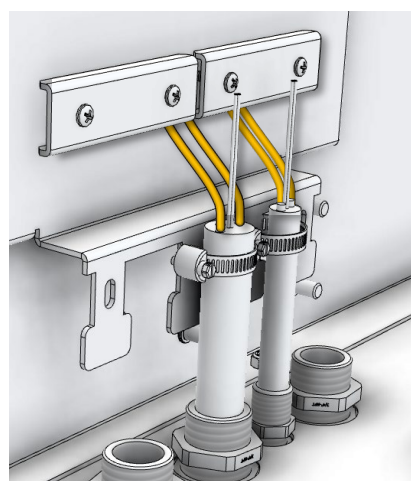
4.4 Store feeder cable slack on provided cable management clips. Mount feeder cassette back and secure in place with push pin.



4.5 Insert distribution cable thru large cable port, tighten external nut and secure jacket with hose clamp.

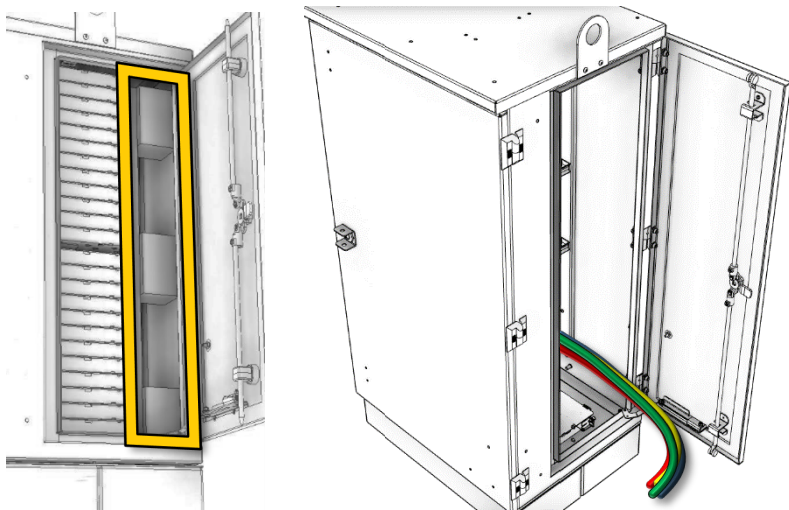


4.6 Lay strength member on back panel and clamp with provided bracket.

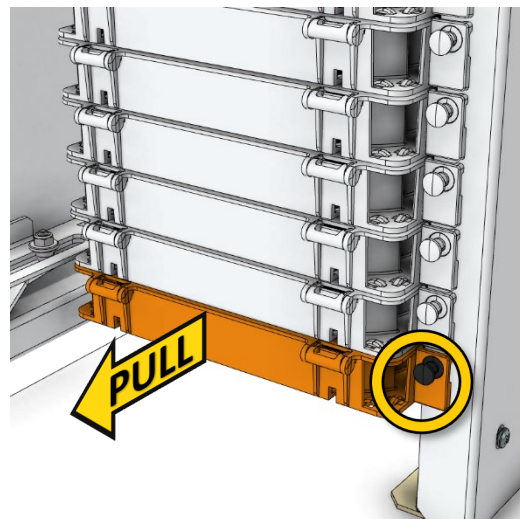




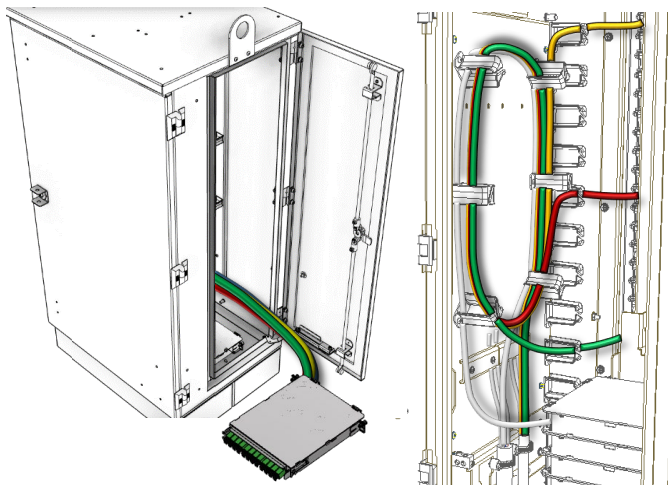
4.7 Remove packing material from behind the cassettes and discard it. Bring all fiber tubes out thru right side door.



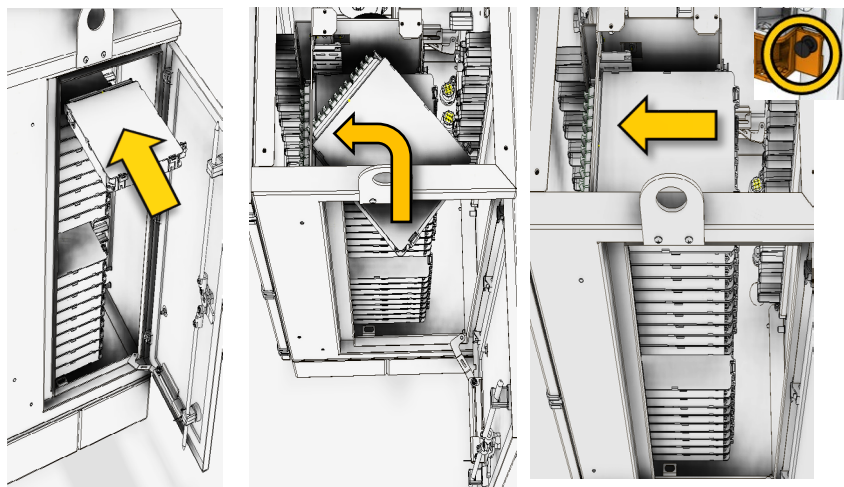
4.8 Remove the distribution cassette by releasing the mounting pin (located on the far side behind the cassette as shown), slide the cassette rearward, and remove the cassette through the side door opening.



4.9 After making required splices inside of cassettes, manage distribution cables on provided management clips.

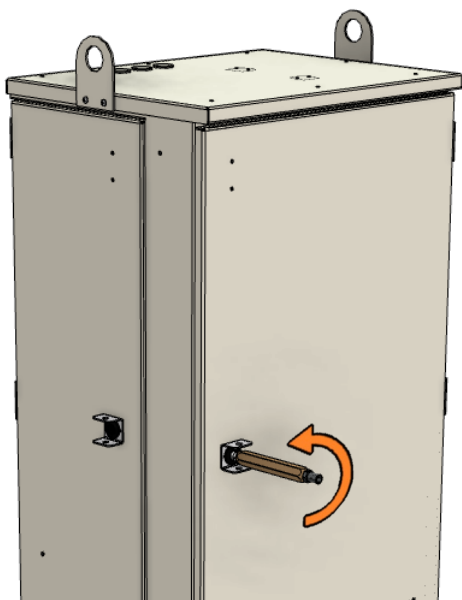


4.10 Reinstall cassettes by sliding into cabinet adapter first, rotating adapters towards front of cabinet, and securing into position by pressing the nylatch pin.

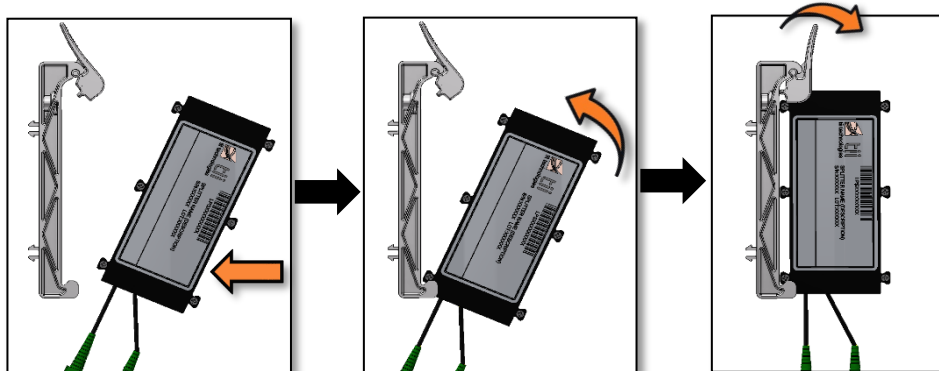


## 5. FOR SPLITTER INSTALLATION

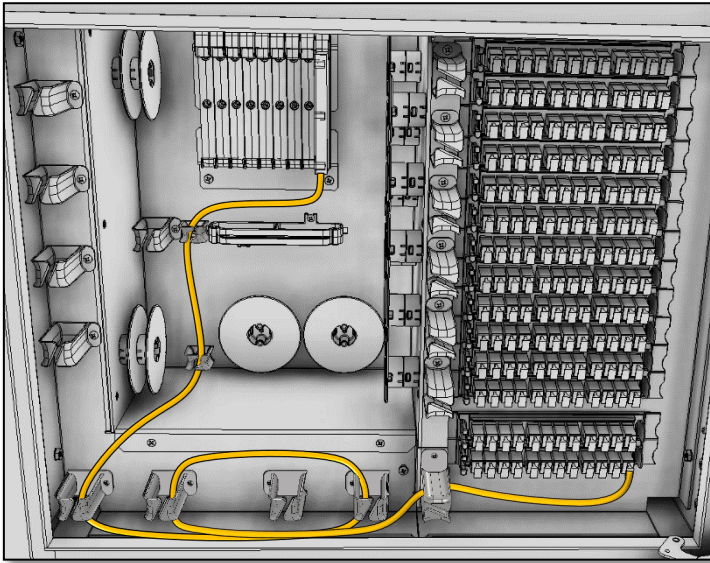
5.1 Open front door with 216 tool.



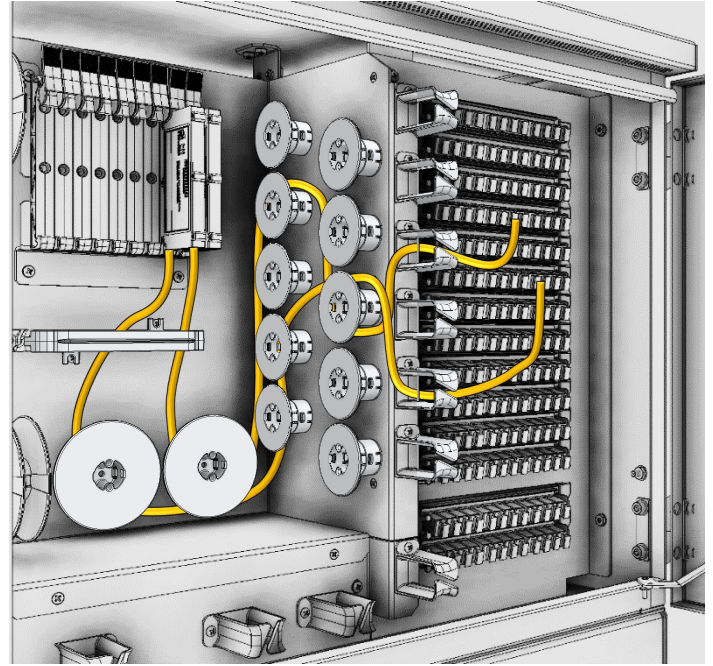
5.2 To install splitter onto mounting bracket, push top of mounting clip toward rear of cabinet. Catch bottom of splitter on bottom bracket and push top of splitter against top clip until it snaps into place.



5.3 Connect splitter input legs to desired adapters on input area and route cable using the provided management clips as needed.



5.4 Connect splitter distribution legs to desired adapters on distribution field and route cable on provided management clips as needed.



5.5 Store unused splitter legs using the provided management clips as indicated below.

