



141 Rodeo Drive  
Edgewood, NY 11717  
Customer Service/Sales 888-844-4720

**TII 372-S/372-S2**  
**100 BASE-T SURGE PROTECTION MODULE**  
P/N 922098  
02/08 Rev F

## INSTALLATION NOTE

### Introduction

This installation note provides the description and installation steps for the TII 372-S/372-S2 Sealed IDC Termination 100 Base-T Surge Protection Module. This module is designed to be used for 100 Base-T IEEE 802.3 network protection. (See Figure 1)

The TII 372-S/372-S2 100 Base-T Surge Protection Module is intended for indoor/outdoor use within listed compatible NIDs, which have been evaluated for the applicable environment.

Each module is capable of terminating 22-24 AWG solid copper wires.

### **NATIONAL ELECTRIC CODE REQUIREMENTS:**

THE PROTECTOR SHALL BE INSTALLED PER NATIONAL ELECTRIC CODE ANSI/NFPA 70, ARTICLE 800, SECTION C, AND SHALL MEET ALL OTHER APPLICABLE LOCAL SAFETY CODES. BOTH THE SERVICE WIRE TRANSMIT AND RECEIVE PAIRS MUST BE CONNECTED FOR THE PROPER FUNCTION OF THE UNIT. BOTH THE RECEIVE AND TRANSMIT CIRCUIT WIRES FROM THE CO MUST BE TERMINATED AT THE RESPECTIVE CO SIDE TERMINAL BLOCK.

**CAUTION:** RISK OF SHOCK IF NOT INSTALLED IN A LISTED OUTDOOR/INDOOR ENCLOSURE

### Installation (See Figure 2)

1. Remove the unit from the packaging and inspect it carefully for damage. If found damaged, obtain another.
2. Install the TII 372-S/372-S2 module in the NID under the lower nut of the ground stud and tighten securely. For illustration purposes Figure 2 shows the 372-S/372-S2 protector mounted in slot 2.

3. Pass the appropriate earth ground wire through the CO (central office) side grommet of the NID and connect it to the ground stud.

4. Run and connect the earth ground wire to the approved ground source making the run as short and straight as possible.

5. Pass the service wire through the CO side grommet of the NID.

6. After stripping the jacket and appropriately terminating the shield of the service wire to the G protector clip, secure the G protector clip under the washer and nut of the NID ground terminal as shown in Figure 2.

7. Disengage "CO" side rocker using a ¼" flat screw driver in the slot provided on top of the rockers.

8. Untwist about 1" of CO (service) side, transmit and receive cable pairs. Insert the unstripped wires through the rocker wire guide holes until all wires hit the back end of the rocker.

9. Hold the wires in place and lower the rocker to its terminated position-using thumb. (A flat ¼" screw driver could be used to assist in terminating wires.)

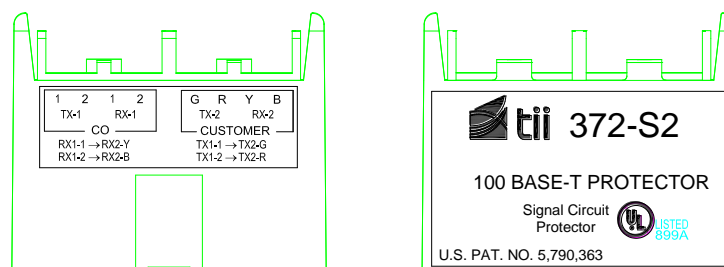
10. Disengage "customer" side rocker.

11. Untwist about 1" of red/green and yellow/black wire pairs from the 100 Base-T subscriber module. Guide wires through the wire guide holes on the customer side rocker. Make sure all the wires are fully seated.

12. Follow Step 9 above to terminate "customer" side wires.

13. Route wiring in NID as to avoid sharp bends. Close cover and secure in place. Perform all customary tests.

Figure 1 – TII Model 372-S / 372-S2 100 Base-T Protector  
(Model 372-S Shown Below)



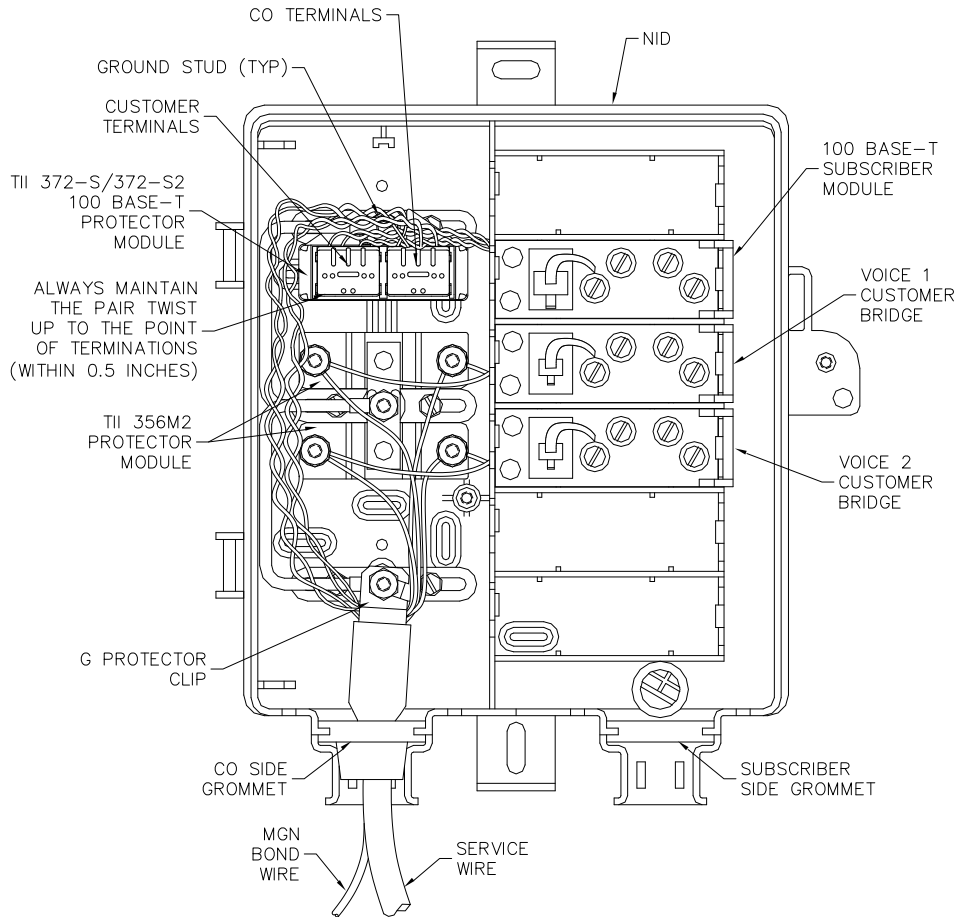


Figure 2 – Typical Installation



141 Rodeo Drive  
 Edgewood, NY 11717  
 Customer Service/Sales 888-844-4720

**Warranty**

See TII Warranty. If this unit fails during the warranty period, the factory should be requested to authorize return. Return the unit prepaid when authorization is received. Units that fail due to abuse or normal wear should be discarded.