

SVM

Switchable Voice Module

For Use When
Porting Existing
Telephone Numbers

Automatic Switching to
Digital Phone Service

Mounts Easily to a
Suitable Flat Surface or
Installs in a Wire Terminal

Provides Secondary
Telephone Line
Surge Protection,
Enhancing Digital
Phone Service Reliability

No Attenuation to
Telephone Signals

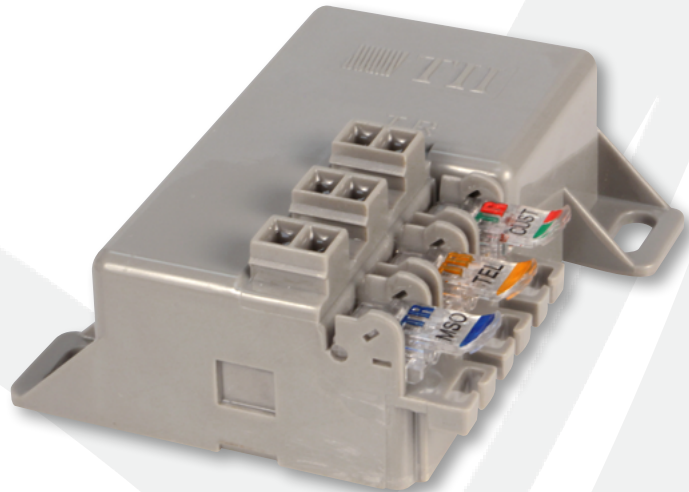


Tii Technologies Inc.

Corporate Headquarters:

141 Rodeo Drive
Edgewood, NY 11717
Phone: 631.789.5000
Fax: 631.789.5063
Toll Free: 888.844.4720
sales@tiitech.com

www.tiitech.com



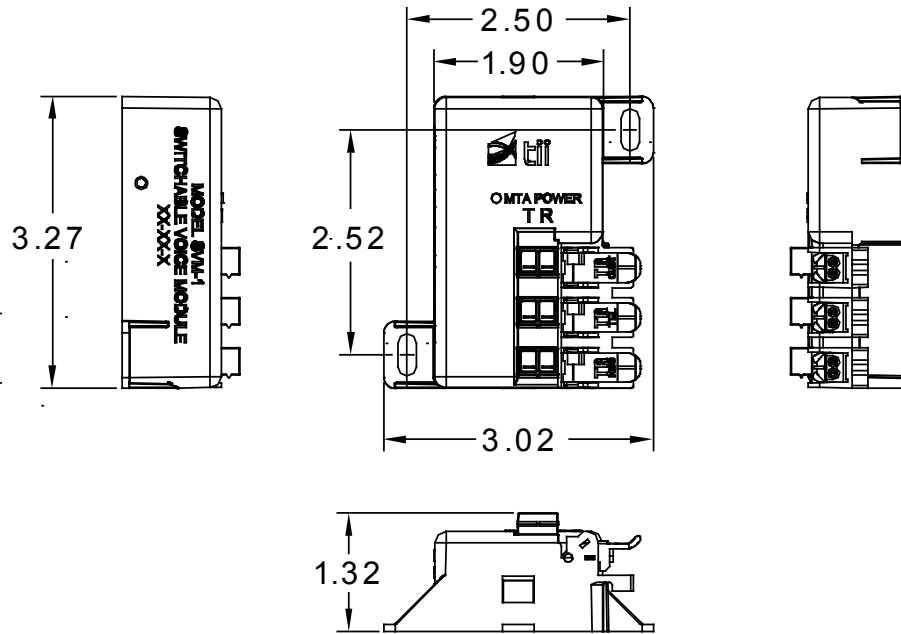
Switchable Voice Module (SVM) provides seamless switching from Telco service to digital phone service. Available as a single switch module (with reset button) or a two-way switching module, the tii SVM provides a flexible design solution to meet individual customer needs. The tii SVM utilizes gel-sealed insulation displacement terminations that provide reliable all weather connectivity. A flashing green LED indicates EMTA power is connected to the SVM.

KEY PRODUCT BENEFITS

- ▶ The customer is not without telephone service during number portability process
- ▶ Eliminates additional truck roll costs by automatically switching service provider connections when ring signals are detected from the MTA
- ▶ Telephone ringing voltage appearing on any of the service provider lines will cause the two way switch to convert to the alternate service provider, whereas the single switch module will switch to the MTA side on appearance of ringing voltage from the MTA
- ▶ A reset feature allows the single switch SVM to be restored to its original configuration
- ▶ Allows faster revenue capture by immediately switching from the incumbent service provider when a ported number is available
- ▶ Compact, low profile design fits into applications where space is limited
- ▶ The SVM Series may be universally mounted via screws to a suitable flat surface or installed within an indoor/outdoor tii Switchable Voice NID (SVN) or 170 Series enclosure
- ▶ Accepts 26 through 22 gauge solid conductor wire sizes
- ▶ Flashing green LED indicates EMTA power

INDUSTRY STANDARDS

- ▶ Listed to UL 1863
- ▶ FCC Part 68 Registered



Dimensions are in Inches

ORDERING INFORMATION

Model No.	Description	Standard Pkg.
SVM-1	2 Pair Input and 1 Pair Output with Reset Button	20 pieces - 0.31 lbs. each