

## SVM-1-0-2

### Two-Way Switchable Voice Module

For Use When  
Porting Existing  
Telephone Numbers

Automatic Switching  
Between Service Providers

Mounts Easily to a  
Suitable Flat Surface or  
Installs in a Wire Terminal

Ringing Voltage on the  
Number Ported Service  
Provider Initiates Transition

IPTV Compliant, No  
Attenuation to ADSL2+/  
VDSL2 Signals

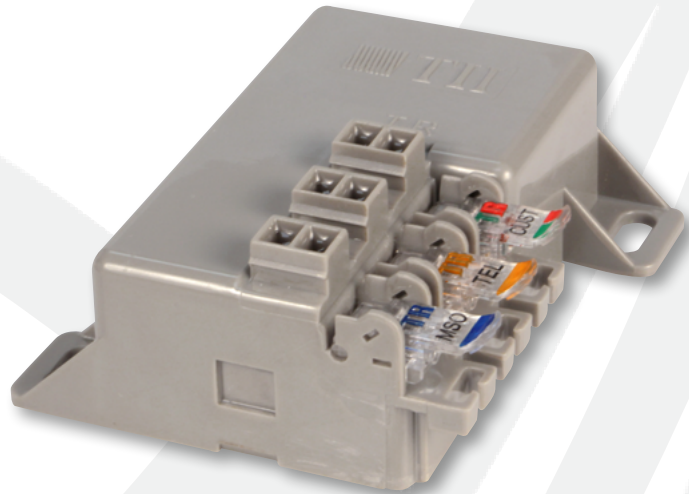


**Tii Technologies Inc.**

**Corporate Headquarters:**

141 Rodeo Drive  
Edgewood, NY 11717  
Phone: 631.789.5000  
Fax: 631.789.5063  
Toll Free: 888.844.4720  
sales@tiitech.com

www.tiitech.com



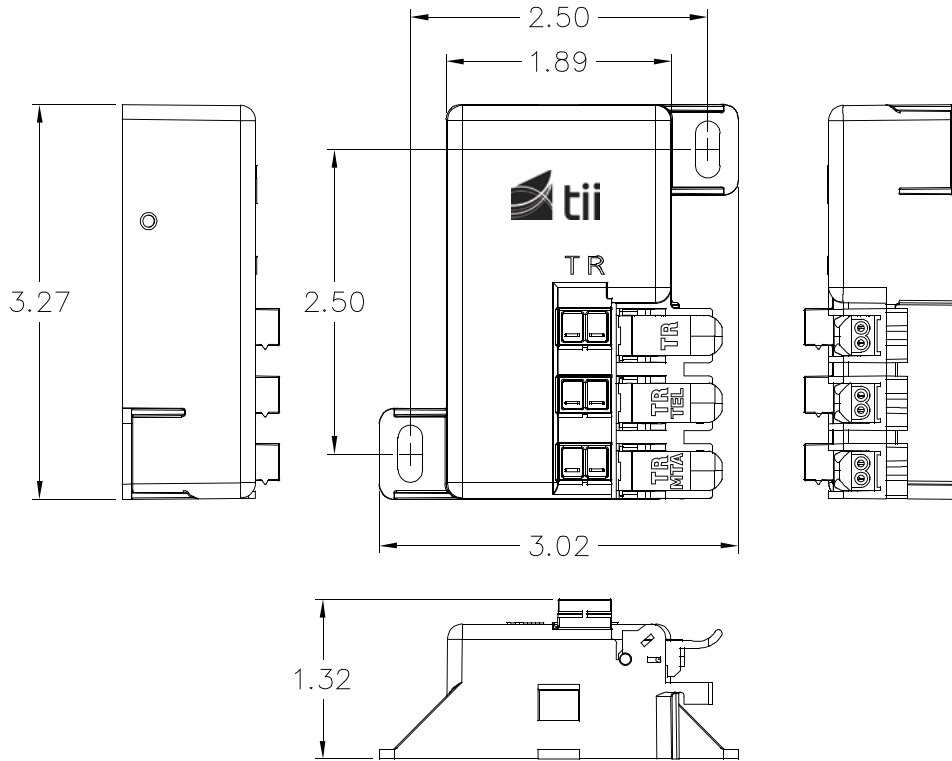
SVM-1-0-2 provides seamless switching between telco phone service and alternate phone service. The SVM-1-0-2 is IPTV ready and is ADSL2+/VDSL2 compliant. As a two-way switching module, the Tii SVM-1-0-2 provides a flexible design solution to meet individual customer needs. The SVM-1-0-2 utilizes gel-sealed insulation displacement terminations that provide reliable all weather connectivity. A second telephone ringing voltage appearance on the alternative service provider initiates switching to the number ported service provider.

#### KEY PRODUCT BENEFITS

- ▶ The customer is not without telephone service during number porting process
- ▶ Eliminates additional truck roll costs by automatically switching service provider connections when ring signals are detected
- ▶ Telephone ringing voltage appearing on any of the service provider lines will cause the two way switch to connect to the alternate service provider
- ▶ Allows faster revenue capture by immediately switching from the incumbent service provider when a ported number is available to the alternate service provider
- ▶ Compact, low profile design fits into applications where space is limited
- ▶ The VM-1-0-2 may be universally mounted via screws to a suitable flat surface or installed within an indoor/outdoor Tii Switchable Voice NID (SVN) or 170 Series enclosure
- ▶ ADSL2+/VDSL2 compliant will not impact IPTV services
- ▶ Accepts 26 through 22 gauge solid conductor wire sizes

#### INDUSTRY STANDARDS

- ▶ Listed to UL 1863



*Dimensions are in Inches*

## ORDERING INFORMATION

Model No.	Description	Standard Pkg.
<b>SVM-1-0-2</b>	2 Pair Input and 1 Pair Output with Two-Way Switching Circuit	20 pieces - 0.31 lbs. each