

## RM4UXB

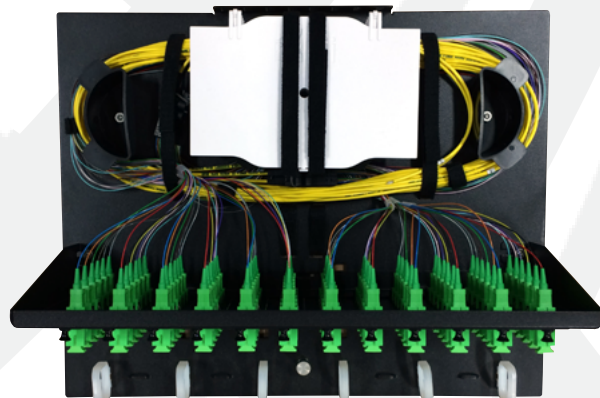
### *Rackmount Fiber Distribution Panel*

Accommodates Up to  
144 Fiber Ports

Available with Various Fiber  
Termination Connectors

Multiple Pigtail and Splice  
Tray Options Available

Used in Telecom Closets,  
Data Centers and Remote  
Distribution Terminals



The RM4UXB is a 4 RU, 12 termination panel rack mount fiber distribution unit designed to support both patching and splicing in one unit. The enclosure has a slide out master panel that allows for easy access of terminations, fiber management and splicing.

#### KEY PRODUCT BENEFITS

- ▶ Available with factory loaded adapter plates, splice trays and pigtails
- ▶ 19 or 23" rack mountable
- ▶ Direct termination or fusion splice pigtails
- ▶ Slide out master tray, front or rear
- ▶ Multiple tie down points for buffer tubes and cable management
- ▶ Fanout kit securing points
- ▶ LGX compatible adapter plates or MTP modules
- ▶ Up to 12 adapter plates or MTP modules

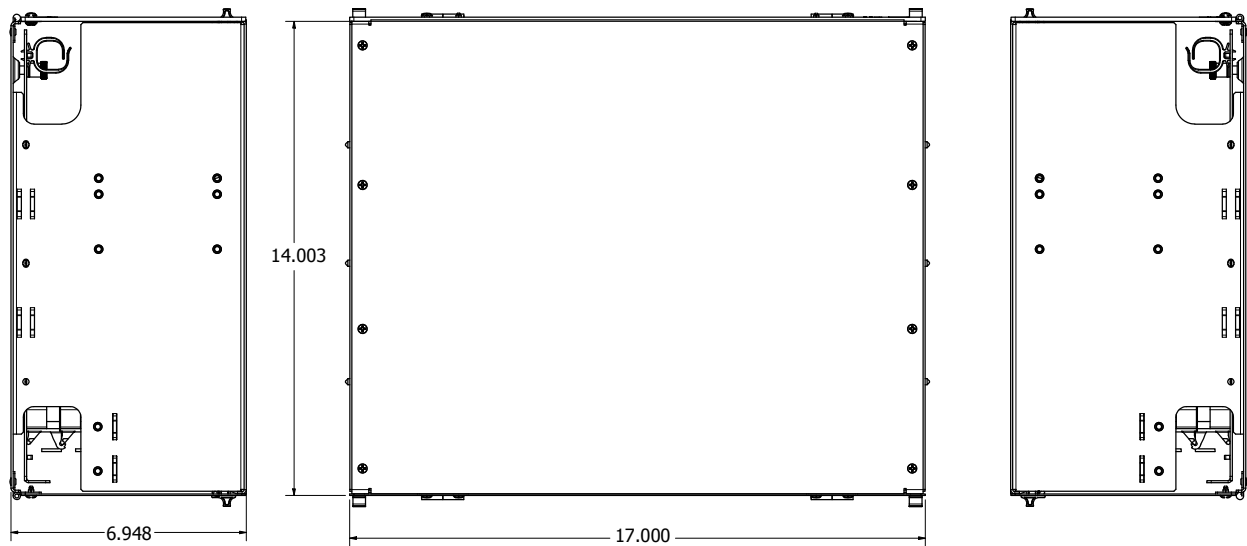


**Tii Technologies Inc.**

**Corporate Headquarters:**

141 Rodeo Drive  
Edgewood, NY 11717  
Phone: 631.789.5000  
Fax: 631.789.5063  
Toll Free: 888.844.4720  
sales@tiitech.com

# RM4UXB



Dimensions are in Inches

## MODEL NUMBER MATRIX

RM4UXB	-XXX	-X	-XX	-X
	Fiber Ports	Fiber Type	Adapter	Pigtails & Splice Trays
	072	R = Singlemode	FC - FC	N = None
	096	K = MM62.5 OM1	FA - FC APC	9 = 900um
	144	C = MM50 OM2	LC - LC	R = 12 Fiber Ribbon
		S = MM50 OM3	SC - SC	
			SA - SC APC	
			ST - ST	

## SPECIFICATIONS

Model #	Description
Adapter Plates	12
Splice Trays	6
Protrusion	4.25"
Dimensions	3.4" H x 17.0" W x 14.1" D
Packaging	10" H x 20" W x 17" D
Weight	12 lbs empty, 15 lbs typical loaded
Material	0.06" Aluminum, Black powder coat

## ACCESSORIES

Model #	Description
RM-SPL-BKT-2	Bracket 2 Splice Tray Capacity
FST-ASF24	Splice Tray 24 Fiber Single Fusion
LG1-xxxxxx-B	LG1 series adapter plates in black (See LG1 product guide)
RM-FM-4U	Flush mount extended rackmount ears (set of 2)