

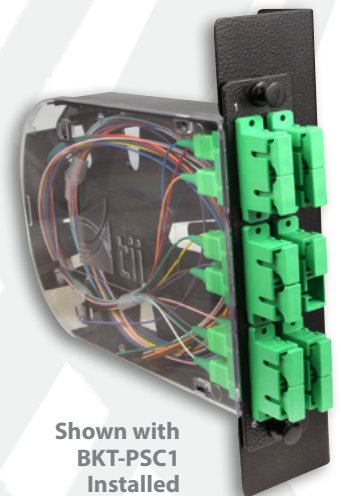
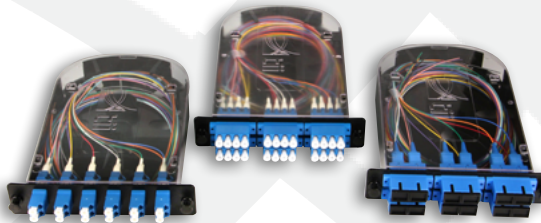
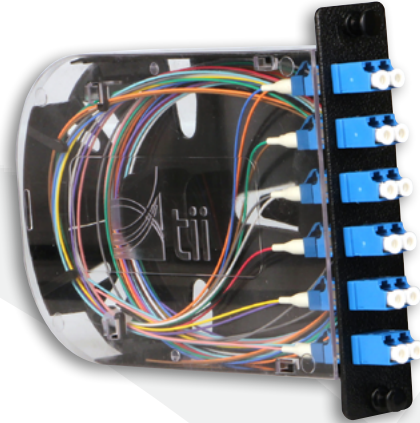
PSC SERIES

Patch and Splice Cassette

FTTx

Data Center

Central Office



Shown with
BKT-PSC1
Installed

Tii's PSC patch and splice cassette will terminate up to 24 fibers in a single slot LGX-118mm industry standard patch panel. No need for extra splice trays or additional slack management of the feeder cable. The modular design allows for simplified network expansion and upgrades. The PSC replaces the need for buying adapter plates, pigtailed, splice trays and cable management accessories separately.

FEATURES

- ▶ LGX-118mm compatible
- ▶ Up to 24 fiber termination
- ▶ Single fusion or ribbon pigtailed
- ▶ Integrated feeder slack storage

STANDARDS COMPLIANCE

- ▶ GR-326, TIA/EIA-604, TIA/EIA-455, NEMA-12



Tii Technologies Inc.

Corporate Headquarters:

141 Rodeo Drive
Edgewood, NY 11717

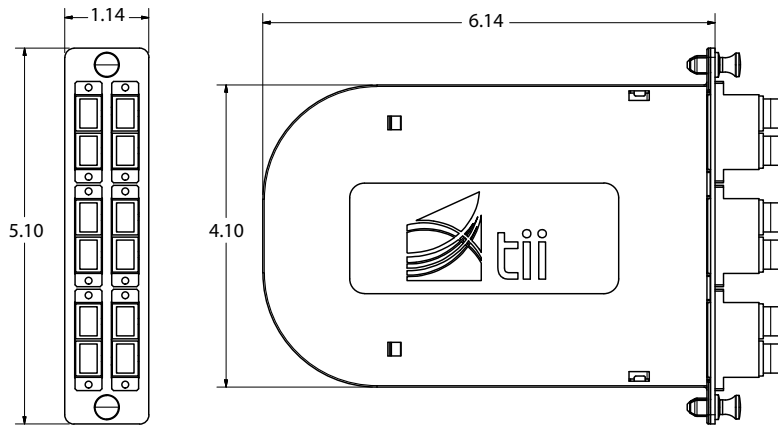
Phone: 631.789.5000

Fax: 631.789.5063

Toll Free: 888.844.4720

sales@tiitech.com

PSC Series



Dimensions are in Inches

SPECIFICATIONS

Property	Value
Adapter Plate Style	LGX 118mm
Standard Packaging	3" x 9" x 11" - 1 lb.

ORDERING INFORMATION

Single Fusion 900um Pigtails

INTERFACE	PORTS	OS-2 G.657A1	MM62.5 OM-1	MM50 OM-2/3/4
LC APC	6	PSC06RLA9B		
	12	PSC12RLA9B		
	24	PSC24RLA9B		
LC UPC	6	PSC06RLC9B	PSC06KLC9B	PSC06SLC9B
	12	PSC12RLC9B	PSC12KLC9B	PSC12SLC9B
	24	PSC24RLC9B	PSC24KLC9B	PSC24SLC9B
SC APC	6	PSC06RSA9B		
	12	PSC12RSA9B		
SC UPC	6	PSC06RSC9B	PSC06KSC9B	PSC06SSC9B
	12	PSC12RSC9B	PSC12KSC9B	PSC12SSC9B
ST UPC	6	PSC06RST9B	PSC06KST9B	PSC06SST9B
	12	PSC12RST9B	PSC12KST9B	PSC12SST9B

Mass Fusion Ribbon Pigtails

INTERFACE	PORTS	OS-2 G.657A1	MM62.5 OM-1	MM50 OM-2/3/4
LC APC	12	PSC12RLARB		
	24	PSC24RLARB		
LC UPC	12	PSC12RLCRB	PSC12KLCRB	PSC12SLCRB
	24	PSC24RLCRB	PSC24KLCRB	PSC24SLCRB
SC APC	12	PSC12RSARB		
SC UPC	12	PSC12RSCRB	PSC12KSCRB	PSC12SSCRB

ACCESSORIES

Model #	Description
LG1-CCH	Conversion Plate LGX118 to CCH
BKT-PSC1	PSC Bracket, 1 Cassette
BKT-PSC2	PSC Bracket, 2 Cassette