

95S-2

Sealed Customer Bridge Modules (CBM)

Equipped with Gel Sealed
RJ-45 Test Jack and IDC
Terminations

Four-Wire Test Capability

Easy To Use Rocker
Terminations (tool-less)

Listed to UL 1863

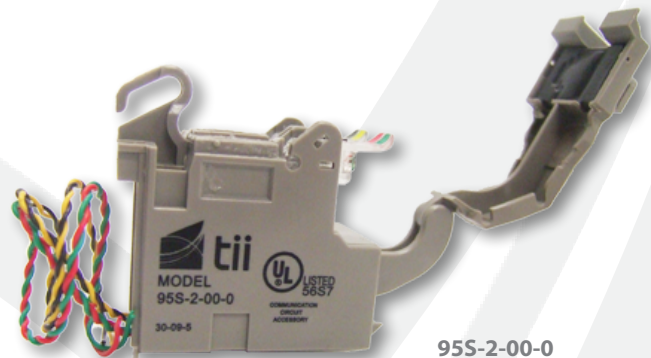


Tii Technologies Inc.

Corporate Headquarters:

141 Rodeo Drive
Edgewood, NY 11717
Phone: 631.789.5000
Fax: 631.789.5063
Toll Free: 888.844.4720
sales@tiitech.com

www.tiitech.com



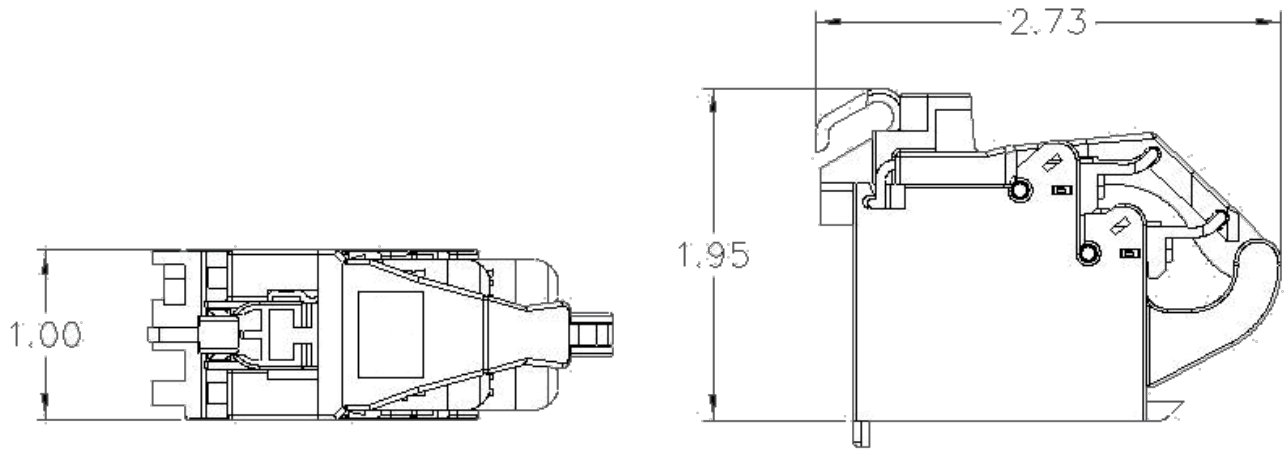
The superior performing 95S Customer Bridge Module is a sealed, environmentally protected unit designed to be compatible with the full line of Tii broadband Network Interface Devices, including the 3700, 3600, 5100, 5300 and the 9600 Series.

KEY PRODUCT BENEFITS

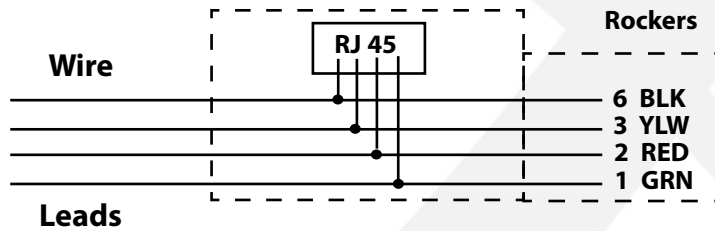
- ▶ Internal connections and the RJ-45 jack are protected from moisture and other contaminants
- ▶ Customer wire connections utilize gel-sealed IDC (Insulation Displacement Connection) terminations which accept 22 AWG thru 26 AWG solid copper wire
- ▶ Convenient rocker feature enables customer to terminate inside wire without the use of tools
- ▶ Clear IDC rockers enable easy visual connection verification
- ▶ A convenient RJ-45 receptacle test access point provides for troubleshooting at the Network Interface Device (NID)
- ▶ Standard features include customer locking with telco bypass and hinged cover

INDUSTRY STANDARDS

- ▶ Meets "Severe and Flooded" requirements of Telcordia GR-49 CORE and TR-NWT-001195
- ▶ Exceeds Telcordia GR-49 CORE requirements for severe climatic conditions
- ▶ Listed to UL 1863

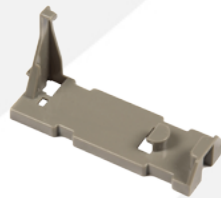


Dimensions are in Inches



ORDERING INFORMATION

Model No.	Description	-X
95S-2-00-X	Indoor Gel Sealed Contact Indoor Master Jack	1 = Spade Connectors
9A	Optional Adapter for 95S-2	



9A Adapter