

95S-1-11

DSL POTS Splitter Module

Occupies Only One Position in Network Interface Device

Approved by CALIX, IOL for ASDL2+, IPTV Deployment

Compatible with 3600, 3700, 5100 and 9600 Series Network Interface Device (NID) Footprints

IDC Terminations for DSL and Voice Signals

Eliminates RJ-11 Plug Maintenance Problems

Utilizes Tii's Switchable RJ-11 Jack (Auto-Jack®)

Exceeds Telcordia Severe Lightning Surge Requirements

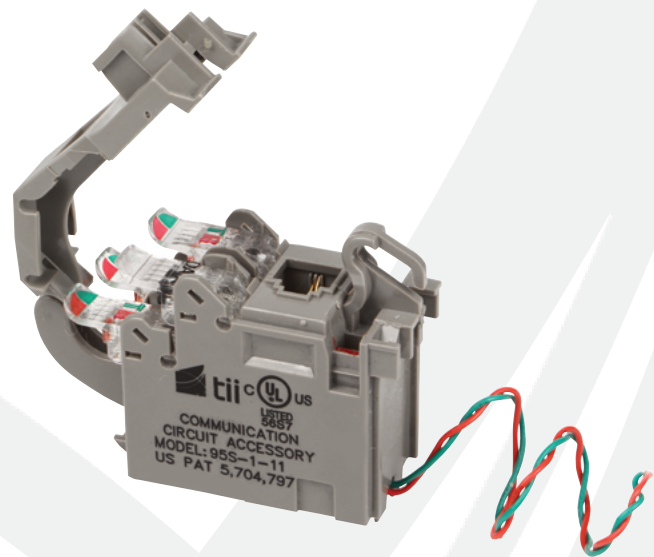


Tii Technologies Inc.

Corporate Headquarters:

141 Rodeo Drive
Edgewood, NY 11717
Phone: 631.789.5000
Fax: 631.789.5063
Toll Free: 888.844.4720
sales@tiitech.com

www.tiitech.com



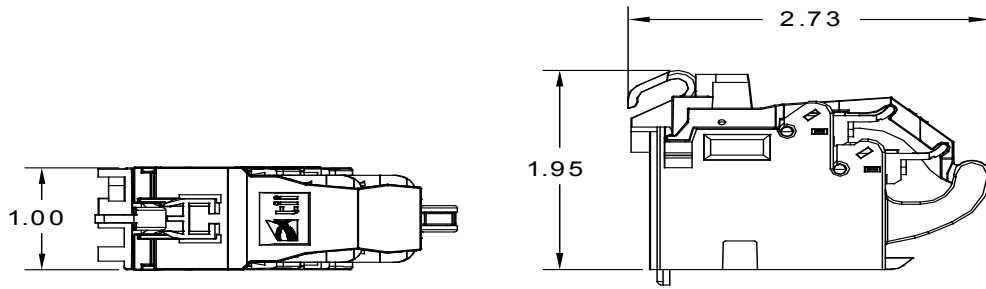
The 95S Series ADSL POTS Splitter Module splits the combined voice and data signals carried on telephone lines to provide separate outputs for phone and data services. The 95S-1-11 utilizes enhanced circuit components to meet ADSL2+ services for IPTV requirements.

KEY PRODUCT BENEFITS

- ▶ Module's unique design provides customer bridging and ADSL POTS splitting all in one module.
- ▶ Module easily snaps in and out of the customer side of the NID and occupies only one position, thereby not compromising the NID's overall capacity
- ▶ Designed for use in a wide variety of Network Interface Devices (NIDs) at the customer premises. Compatible with Tii 3600, Tii 3700, Tii 5100 and Tii 9600 NID footprints
- ▶ The Tii splitter design makes it possible to use a single phone line to provide triple play services including ADSL2+ and IPTV
- ▶ With module installed, an additional standard POTS line module is not needed
- ▶ Module includes Tii's unique patented switchable RJ-11 Jack (Auto-Jack®). The Auto-Jack® does not require an RJ-11 plug for normal operation and delivers unparalleled reliability
- ▶ When engaged, the Tii Auto-Jack® connects the RJ-11 test plug contacts to the central office (CO) for dial tone validation while disconnecting the customer from the circuit
- ▶ Auto-Jack® assembly includes a sealed test point access feature, which allows the craft to test subscriber wiring even while a test plug is mated into the Auto-Jack® receptacle. This greatly facilitates the testing process
- ▶ Standard features such as customer locking/telco bypass, and hinged covers become available when installed in a tii Network Interface Device

INDUSTRY STANDARDS

- ▶ ANSI T1.424 Compliant
- ▶ Auto-Jack® RJ-11 unit exceeds Telcordia GR-49 CORE requirements for severe climatic conditions, both first and second level lightning surge requirements in the open and short circuit mode
- ▶ Compliant to GR49, GR1089, GR3167, TR-NWT-001195
- ▶ Listed To UL1863



Dimensions are in Inches

SPECIFICATIONS

Electrical (Complies with ANSI T1.424 Issue 2 Annex E)

DC Loop Current	0 to 100 mA
DC Loop Voltage (tip-to-ring)	0 to -60Vdc
Ringing Signals	103 Vrms superimposed on the DC Loop Voltage; 20 - 30 Hz
DC Resistance	< 20 ohms, POTS tip-to-ring with Line port (U-R) shorted
Insertion Loss (Short & Long Loop)	≤ 0.5 dB
Tip-to-Ring Capacitance, POTS port	20 ≤ C ≤ 100 nF; 20 - 30 Hz
Input Impedance (Measured Level)	≤ 0.25 dB; 30 - 2200 kHz, ZTr = 600
Attenuation Distortion (Voice Band), Increase relative to Insertion Loss at 1004 Hz	+0.7 to -0.5dB; 200 - 3.4 kHz, short loop, ZTc = 900, ZTr = 600 +0.7 to -0.5dB; 3.4 - 4.0 kHz, short loop, ZTc = 900, ZTr = 600 +0.4 to -0.5dB; 200 - 3.4 kHz, long loop, ZTc = 900, ZTr = 600 +0.5 to -0.5dB; 3.4 - 4.0 kHz, long loop, ZTc = 900, ZTr = 600
Delay Distortion (Voice Band)	< 25μs
Return Loss (Voice Band) (Short & Long Loop)	> 7 dB
Longitudinal Balance, Two Port Technique, DSL to Line Port (U - R) and Line Port (U - R) to POTS	> 60 dB; 30 - 1100 kHz > 55 dB; 1100 - 2200 kHz
Capacitance to Ground, POTS Port	≤ 1.0 nf; 20 - 30 Hz
ADSL2+ Band Attenuation	> 65 dB; 30 - 2200 kHz
DC Current Influence (Ring Trip)	< 2% up to 300 mA
Intermodulation Distortion (MTPR)	30 - 2200 kHz > 50 dB

Environmental

Lightning Surge	GR-1089 CORE Level 1 and Level 2 Surge
Power Cross	GR-1089 CORE First and Second Level AC Power Fault Immunity
Operating Temperature	-40 to +65°C (-40 to 149°F)
Relative Humidity	0 to 95%, non-condensing

ORDERING INFORMATION

Model No.	Description	Standard Pkg.
95S-1-11	ADSL POTS Splitter with Wire Leads	40 Pieces, 0.14 lbs. each
95S-1-11-1	ADSL POTS Splitter with Wire Leads and #10 Terminal Lugs	