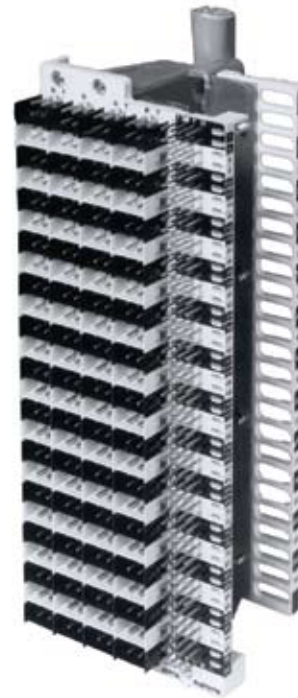


The 503P Connector Block features front access for all functions of the block-jumper administration, protector module administration, test field access, and OSP cable termination (optional). The block is designed to terminate outside cable pairs (or exchange equipment) on a main distribution frame. The block terminates 100 pairs.

FEATURES & BENEFITS

- 100-pair front facing test field
- Compact design saves space and increases number of protected pair per frame vertical
- Accommodates Porta Systems protector modules
- Block is equipped with universal mounting bracket and will fit the whole mounting pattern on most frames. Adapter strips are available for special requirements
- Fanning strips allow easy wire management for both field stubbing and cross connection to horizontal blocks bracket
- Module “detent” feature
(In this position the outside pair is disconnected from the exchange equipment jumper field)
- Front ground test point offers labor savings and reliability
- Factory stubbed units available
- Operating Temperature: -13°F to 149°F (-25°C to 65°C)



ORDERING INFORMATION

Model#	Pair Count	Input	Output	Modules	Cover
503P	100	Wire Wrap Pins	Wire Wrap Pins	Available upon Request	No

*Factory Stubbed Blocks add “24 or 22” to indicated cable AWG, “x” and length of cable required. For Example: 503P-WW (24x50)

503P

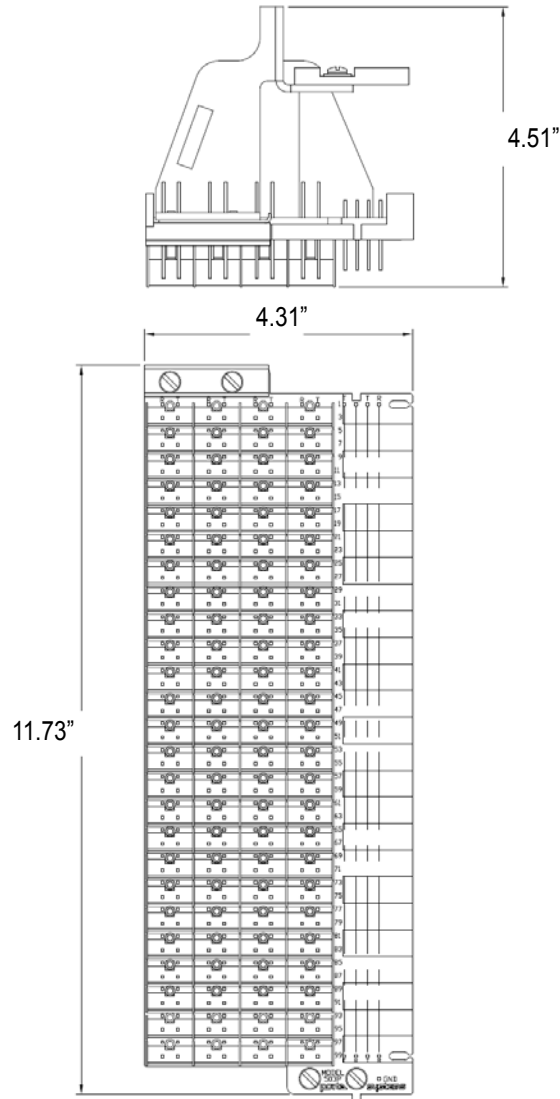
SINGLE-PIN PRODUCTS

PROTECTOR BLOCK

Wire Wrap Pins



MECHANICAL SPECIFICATIONS FOR 503P PROTECTOR BLOCK:



Pair Count	Dimensions (height x width x depth)	Weight (approx.)*
100 PAIR	11.73" x 4.31" x 4.55" (29.8 cm x 10.9 cm x 11.6 cm)	2 lbs.

* Weight - Add approx 0.5 oz per installed module.



For more information contact:
 141 Rodeo Dr.
 Edgewood, NY 11717
 T. 631.789.5000
 Toll Free 888.844.4720
 F. 631.789.5063
 sales@tiinettech.com
 www.tiinettech.com