

366

Protector Unit

Long Life Two-Electrode
Gas Tube Protection

Failshort Design with
Back-up Airgap

Direct Field Replacement
for Carbon Protectors

Fits Standard 7/16"
-20 Thread Wells

Slotted Head Design for
Easy Installation

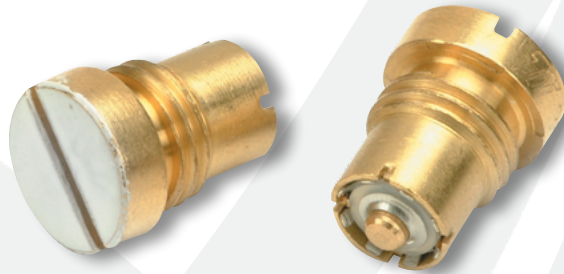


Tii Technologies Inc.

Corporate Headquarters:

141 Rodeo Drive
Edgewood, NY 11717
Phone: 631.789.5000
Fax: 631.789.5063
Toll Free: 888.844.4720
sales@tiitech.com

www.tiitech.com



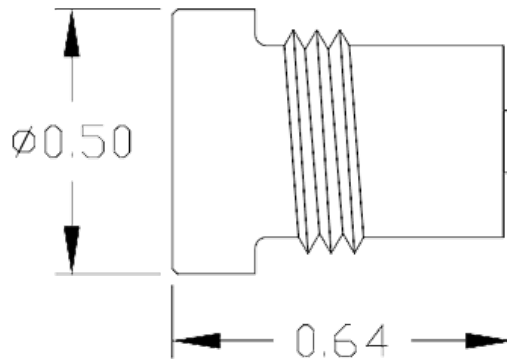
The 366 Protector Unit represents a significant technological advancement as a direct field replacement for carbon and other gas tube protectors. This unit not only replaces carbon and conventional tubes that fit 7/16"-20 thread wells, but it has the advantage of Tii's Heavy Duty two-electrode gas tube and back-up airgap.

KEY PRODUCT BENEFITS

- ▶ Ideally suited for IP-based Internet Protocol access.
- ▶ Each 366 Protector Unit consists of a tii Heavy Duty two-electrode gas tube with an external back-up airgap, and a fusible alloy pellet in a threaded 7/16" O.D. shell
- ▶ These three mechanisms provide maximum failsafe protection with consistent efficiency and long functional life:
 - 1) On transient surges, the two-electrode gas tube operates quickly to shunt the surge to ground
 - 2) The airgap functions as a back-up in the unlikely event that the gas tube seal is damaged
 - 3) The failshort mechanism shorts the line to ground in a power cross situation
- ▶ Gas tubes are constructed of selected metal alloy and ceramic materials to ensure many years of dependable service
- ▶ Two-electrode gas tube provides low maintenance cost without the problems normally associated with carbon protectors
- ▶ The sealed atmosphere in the gas tube assures fast and consistent response with a stable breakdown voltage. When a surge is no longer present, the tii 366 Protector Unit will immediately self-restore

INDUSTRY STANDARDS

- ▶ Listed to UL 497
- ▶ Meets Telcordia GR-1361-CORE



Dimensions are in Inches

SPECIFICATIONS

DC Breakdown:	265-600Vdc
*Impulse Breakdown Voltage @ 100 V/ μ Sec:	500V Typical 750 Volts Maximum
*Impulse Breakdown Voltage in Vented Condition @ 100 V/ μ Sec:	1000V Maximum
*Insulation Resistance @ 100 V/ μ Sec:	100 Megohms
*Capacitance:	<20pF
DC Holdover: 52.5V, 260 mA <150msec 135V, 200 mA	
Service Life	
10 Amp, 10/1000 waveform:	1500 surges minimum
100 Amp, 10/1000 waveform:	100 surges minimum
300 Amp, 10/1000 waveform:	50 surges minimum
2000 Amp, 10/250 waveform:	5 surges minimum
6Hz AC Discharge:	
10 Amp rms, 1 second:	20 operations
1 Amp rms, 1 second:	60 operations
Maximum Single Impulse Discharge Current – 8/20 μ Sec waveform:	10k Amp
*Line to ground	Test Method: Telcordia GR-1361-CORE

ORDERING INFORMATION

Model No.	Description
366	Protector Unit 7/16" x 20