

312 Series

Single Pair Station Protector

Compact Design

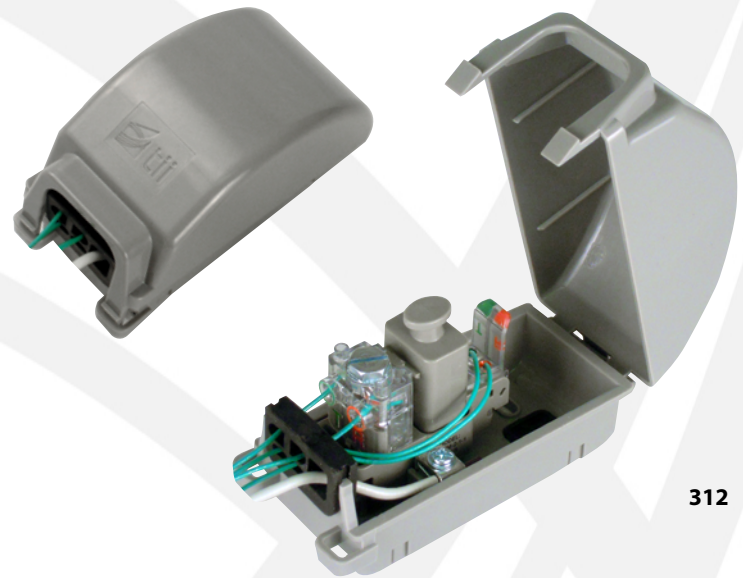
Rugged Construction

Gel-Sealed IDC Terminations

UV Resistant Plastics

Weather Resistant/Grommet
Equipped Closure

Outdoor Rated



312

The 312 Series Enclosure is molded of durable, weather-resistant thermoplastic. Contains Gel-sealed IDC terminations (no special tools required), or screw drive IDC connections with removable 5 pin connection/protection module. Terminates wire gauges .4mm to 1.5mm. Equipped with easily accessible test ports.



Tii Technologies Inc.

Corporate Headquarters:

141 Rodeo Drive
Edgewood, NY 11717
Phone: 631.789.5000 • Fax: 631.789.5063
Toll Free: 888.844.4720
sales@tiitech.com

Locations:

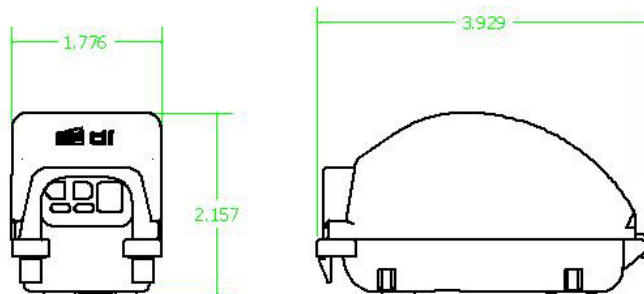
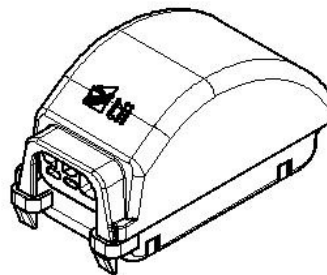
South March
Long March Industrial Estate
Daventry, Northamptonshire, NN11 4PH, UK
Phone: +44 (0) 1327 301853
Fax: +44 (0) 1327 879532
sales@tiitech.co.uk

Av. José de Escandón y Helguera
No. 21 Ciudad Industrial
Matamoros, Tamaulipas, C.P. 87494, México
Phone: 868.812.8011 • Fax: 868.812.8025
salesmx@tiitech.com.mx

KEY PRODUCT BENEFITS

- ▶ Gel-sealed IDC terminations (no special tools required), or screw drive IDC connections.
- ▶ Removable 5 pin connection/protection module.
- ▶ Chemical resistant construction.
- ▶ Terminates wire gauges .4mm to 1.5mm.
- ▶ Equipped with easily accessible test ports.
- ▶ Available in non-protected and protected versions.
- ▶ Enclosure is molded of durable, weather-resistant thermoplastic that resists cracking, crazing and discoloration.
- ▶ Hinged cover is designed to fit securely to base; providing maximum protection against environmental conditions and the intrusion of foreign matter.
- ▶ Flexible grommet in the base is provided to seal the wiring exit area, allowing room for drop, ground and station wiring.
- ▶ A common ground point is provided for grounding and bonding the shield of buried drop.

312 Series



Dimensions are in Inches

ORDERING INFORMATION

312	-X	-X	-X
Housing & Module with Protector	-1 DRM equipped with 2 Screw Drive IDCs (Telco IN/Cust. OUT) -2 DRM equipped with 1 Screw-down IDC (Telco IN) and 1 Tool-less IDC (Cust. OUT)	-1 Protected -2 Non-Protected	-0 Non-Protected -1 350V +/- 20% -2 230V +/- 20% -3 260V +/- 10% -4 550V +/- 20%
DRM	-X	-X	-X
Module with Protector	-1 DRM equipped with 2 Screw Drive IDCs (Telco IN/Cust. OUT) -2 DRM equipped with 1 Screw-down IDC (Telco IN) and 1 Tool-less IDC (Cust. OUT)	-1 Protected -2 Non-Protected	-0 Non-Protected -1 350V +/- 20% -2 230V +/- 20% -3 260V +/- 10% -4 550V +/- 20%
DRP	-X		
Protector Only	-0 Non-Protected -1 350V +/- 20% -2 230V +/- 20% -3 260V +/- 10% -4 550V +/- 20%		